

## Select Portfolio Management, Inc

26800 Aliso Viejo Parkway  
Suite 150  
Aliso Viejo, CA 92656  
949-975-7900  
800-445-9822  
info@selectportfolio.com  
www.selectportfolio.com

**SELECT**

Portfolio Management, Inc.  
REGISTERED INVESTMENT ADVISOR  
Money Management, Inc.  
REGISTERED INVESTMENT ADVISOR

# Saving for College



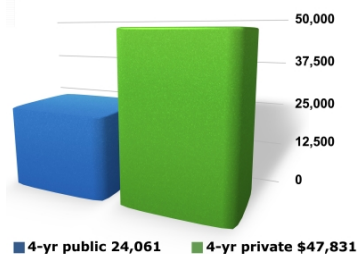
**Even though college costs are high, don't worry about saving 100% of the total. Many families save only a portion of the projected costs--a good rule of thumb is 50%--and then use this as a "down payment" on the college tab, similar to the down payment on a home.**

There's no denying the benefits of a college education: the ability to compete in today's job market, increased earning power, and expanded horizons. But these advantages come at a price. And yet, year after year, thousands of students graduate from college. So, how do they do it?

Many families finance a college education with help from student loans and other types of financial aid such as grants and work-study, private loans, current income, gifts from grandparents, and other creative cost-cutting measures. But savings are the cornerstone of any successful college financing plan.

## College costs keep climbing

It's important to start a college fund as soon as possible, because next to buying a home, a college education might be the biggest purchase you ever make. According to the College Board, for the 2015/2016 school year, the average cost of one year at a four-year public college for in-state students is \$24,061, while the average cost for one year at a four-year private college is \$47,831. Many private colleges cost substantially more.



Though no one can predict exactly what college might cost in 5, 10, or 15 years, annual price increases in the range of 3% to 6% would certainly be in keeping with historical trends. The following chart can give you an idea of what future costs might be, based on the most recent cost data and an assumed annual college inflation rate of 5%. (Source: The College Board, Trends in College Pricing, 2015)

Year	4-yr public	4-yr private
2015/16	\$24,061	\$47,831
2016/17	\$25,264	\$50,222
2017/18	\$26,527	\$52,733
2018/19	\$27,853	\$55,370
2019/20	\$29,246	\$58,138
2020/21	\$30,708	\$61,045
2021/22	\$32,244	\$64,098
2022/23	\$33,856	\$67,303
2023/24	\$35,549	\$70,668
2024/25	\$37,326	\$74,201
2025/26	\$39,192	\$77,911

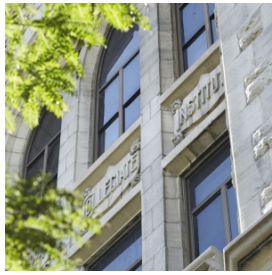
**Tip:** *Even though college costs are high, don't worry about saving 100% of the total. Many families save only a portion of the projected costs--a good rule of thumb is 50%--and then use this as a "down payment" on the college tab, similar to the down payment on a home.*

## Focus on your savings

The more you save now, the better off you'll likely be later. A good plan is to start with whatever amount you can afford, and add to it over the years with raises, bonuses, tax refunds, unexpected windfalls, and the like. If you invest regularly over time, you may be surprised at how much you can accumulate in your child's college fund.

Monthly Investment	5 years	10 years	15 years
\$100	\$6,977	\$16,388	\$29,082
\$300	\$20,931	\$49,164	\$87,246
\$500	\$34,885	\$81,940	\$145,409

**Note:** *Table assumes an average after-tax return of 6%. This is a hypothetical example and does not reflect the actual performance of any investment. All*



*investing involves risk, including the possible loss of principal, and there can be no guarantee that any investing strategy will be successful.*

## **College savings options**

You're ready to start saving, but where should you put your money? There are several college savings options, and it's smart to consider tax-advantaged strategies whenever possible. Here are some options.

### **529 plans**

529 plans are one of the most popular tax-advantaged college savings options. They include both college savings plans and prepaid tuition plans, though college savings plans are far more popular. With either type of plan, your contributions grow tax deferred and withdrawals are tax free at the federal level if the money is used for qualified education expenses. States may also offer their own tax advantages. (For withdrawals not used for qualified education expenses, earnings are subject to taxation as ordinary income and possibly a 10% federal income tax penalty.)

A college savings plan is an individual investment account that lets you direct your contributions to one or more of the plan's investment portfolios. With a prepaid tuition plan, you purchase tuition credits at today's prices for use at specific colleges in the future. With either type of plan, participation isn't restricted by income level and lifetime contribution limits are high, typically \$300,000 and up (limits vary by state).

### **Coverdell ESA**

A Coverdell education savings account (ESA) is a tax-advantaged education savings vehicle that lets you contribute up to \$2,000 per year for a beneficiary's K-12 or college expenses. Your contributions grow tax deferred and earnings are tax free at the federal level if the money is used for qualified education expenses. You have complete control over the investments you hold in the account, but there are income restrictions on who can participate, and the \$2,000 annual contribution limit isn't likely to put much of a dent in college expenses.

### **U.S. savings bonds**

The interest earned on Series EE and Series I saving bonds is exempt from federal income tax if the bond proceeds are used for qualified college expenses. These bonds earn a guaranteed (as to the timely payment of principal and interest by the federal government), modest rate of return, and they are

easily purchased at most financial institutions or online. However, to qualify for tax-free interest, you must meet income limits.

### **Custodial account (UTMA/UGMA)**

A custodial account allows a minor to hold investment assets in his or her own name with an adult as custodian. All contributions to the account are irrevocable gifts to your child, and assets in the account can be used to pay for college. When your child turns 18 or 21 (depending on state law), he or she will gain control of the account. Earnings and capital gains generated by the account are taxed to your child each year. Under the kiddie tax rules, for children under age 19 and for full-time students under age 24 who don't earn more than one-half of their support, the first \$1,050 of earned income is tax free, the next \$1,050 is taxed at the child's rate, and any amount over \$2,100 is taxed at your rate.

### **Roth IRA**

Though technically not a college savings option, some parents use Roth IRAs to save and pay for college. Contributions to a Roth IRA can be withdrawn at any time and are always tax free. For parents age 59½ and older, a withdrawal of earnings is also tax free if the account has been open for at least five years. For parents younger than 59½, a withdrawal of earnings--typically subject to income tax and a 10% premature distribution penalty--is spared the 10% penalty if the withdrawal is used to pay for a child's college expenses.

## **A word on financial aid**

Many families rely on some form of financial aid to pay for college, which includes loans, grants, scholarships, and work-study. Financial aid can be based on financial need or on merit. To determine financial need, the federal government and colleges look primarily at your family's income, but other factors come into play, including how many children you'll have in college at the same time and your assets. To get an idea of how much aid your child might be eligible for at a particular college, you can fill out the net price calculator on that college's website.

The bottom line, though, is don't rely too heavily on financial aid. Although it can certainly help cover college costs, student loans often make up the largest percentage of the typical aid package, and excessive student loan debt can negatively affect borrowers for years. The lesson? The more you save now, the less you and your child will need to fund later.

**Note: Investors should consider the investment objectives, risks, charges, and expenses associated with 529 plans before investing; specific plan information is available in each issuer's official statement. Also, before investing, consider whether your eligibility for any state tax benefits is contingent on your participation in your own state's 529 plan. There is the risk that the investments may not perform well enough to cover college costs as anticipated.**

This material does not constitute the rendering of investment, legal, tax or insurance advice or services. It is intended for informational use only and is not a substitute for investment, legal, tax, and insurance advice. State, national and international laws vary, as do individual circumstances; so always consult a qualified investment advisor, attorney, CPA, or insurance agent on all investment, legal, tax, or insurance matters. The effectiveness of any of the strategies described will depend on your individual situation and on a number of other factors.

### **Advisory Services Offered Through Select Portfolio Management, Inc.**

A Registered Investment Advisor

Securities Offered Through Securities Equity Group

Member FINRA [www.finra.org](http://www.finra.org) , SIPC [www.sipc.org](http://www.sipc.org)